

COLORMARK

Gel nail polish bottle



Net content: 8-23ml



Net content: 8-30ml



Net content: 10-12ml



Net content: 10ml



Net content: 10ml



Net content: 20ml



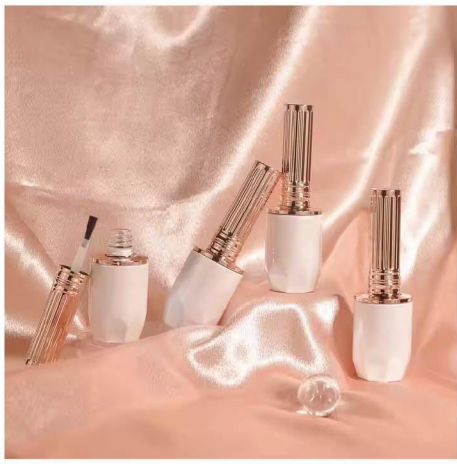
Net content: 12ml



Net content: 10-15ml



Net content: 10-15ml



Net content: 10ml



Net content: 18ml



Net content: 15ml



Net content: 15ml



Net content: 15ml



Net content: 8ml



Net content: 12ml



Net content: 15ml



Net content: 15ml



Net content: 10ml



Net content: 10ml



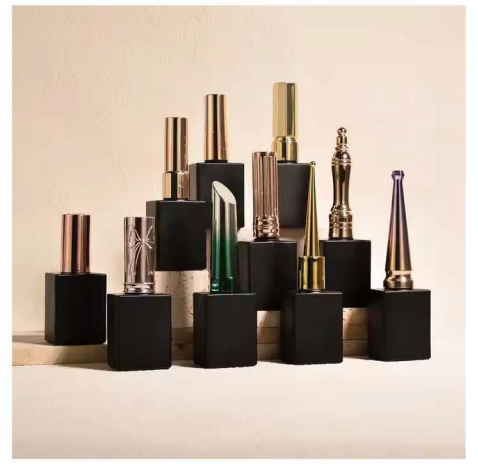
Net content: 13ml



Net content: 8-23ml



Net content: 30ml



Net content: 15ml



Net content: 15ml



Net content: 12ml



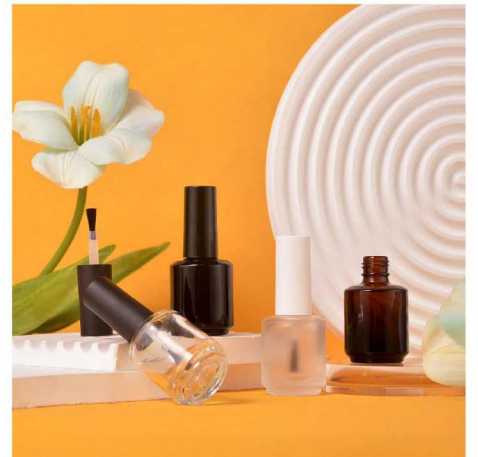
Net content: 8ml



Net content: 8ml



Net content: 12ml



Net content: 12ml



Net content: 12ml



Net content: 12ml



Net content: 8-15ml



Net content:10-15ml



Net content:10-23ml



Net content:10ml



Net content:8ml



Net content:8ml



Net content:10ml



Net content:10/15ml



Net content:15ml



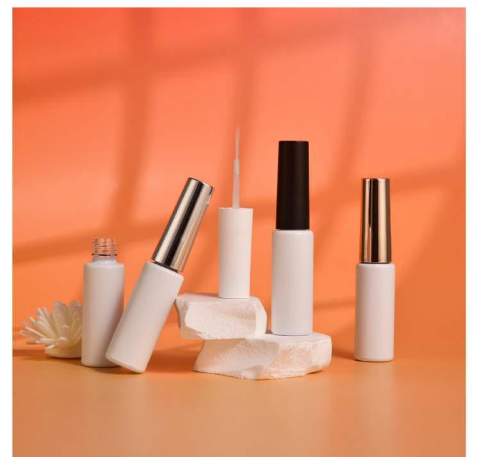
Net content:15ml



Net content:8ml



Net content:15ml



Net content:8ml



Net content: 12ml



Net content: 15ml



Net content: 12ml



Net content: 10ml



Net content: 10ml



Net content: 8ml



Net content: 12ml



Net content: 10ml



Net content: 12ml



Net content: 10ml



Net content: 12ml



Net content: 15ml



Net content:10ml



Net content:15ml



Net content:10ml



Net content:12ml



Net content:8-15ml



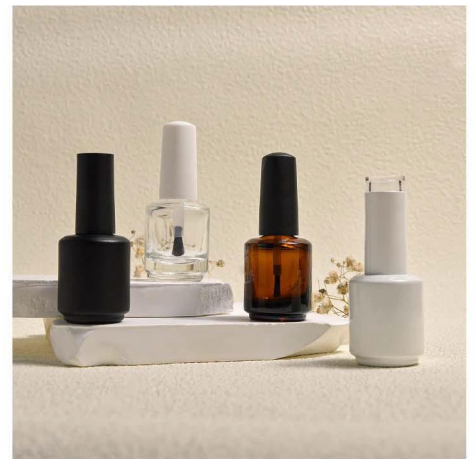
Net content:10ml



Net content:10ml



Net content:12ml



Net content:15ml



Net content:12ml



Net content:10/15ml



Net content:12ml

COLORMARK

Gel nail polish bottle



Net content: 15ml



Net content: 10/15ml



Net content: 8ml



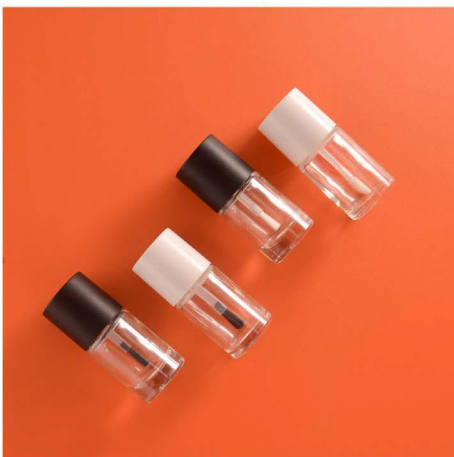
Net content: 10ml



Net content: 18ml



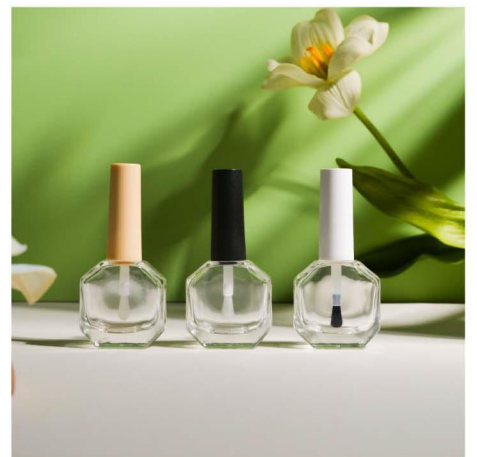
Net content: 20ml



Net content: 10ml



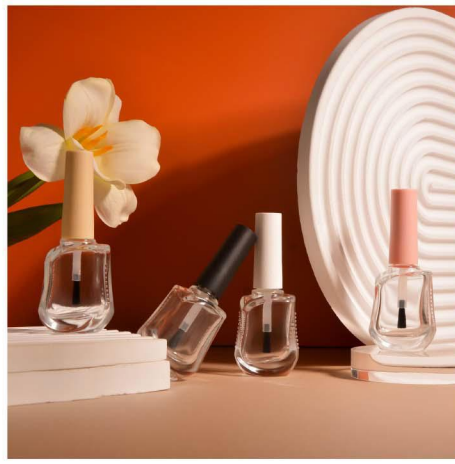
Net content: 8-23ml



Net content: 12ml



Net content:18ml



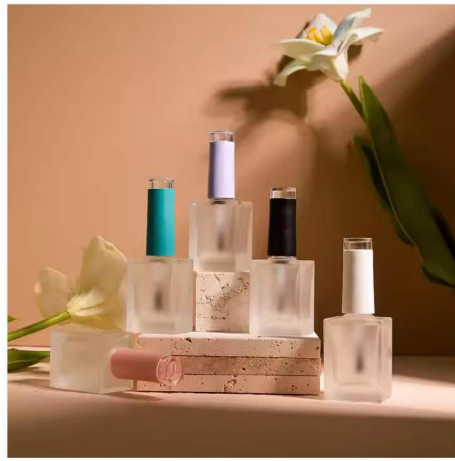
Net content:12ml



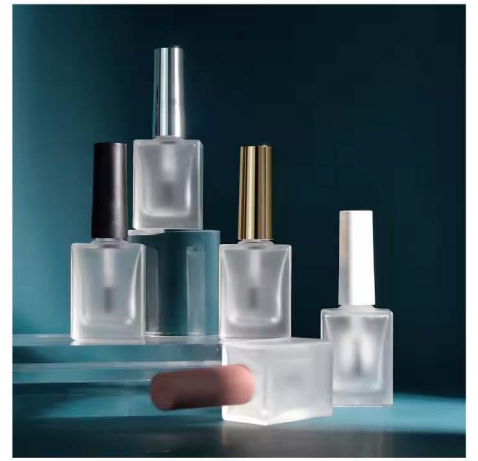
Net content:8ml



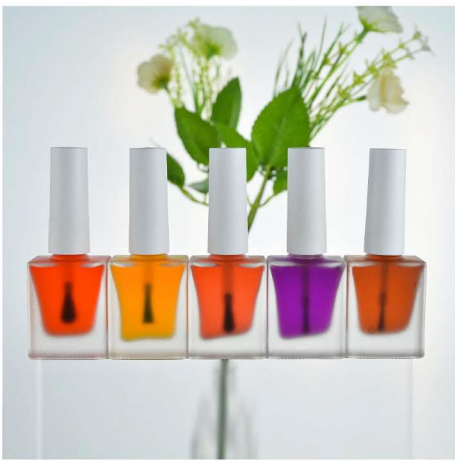
Net content:12ml



Net content:15ml



Net content:15ml



Net content:10ml



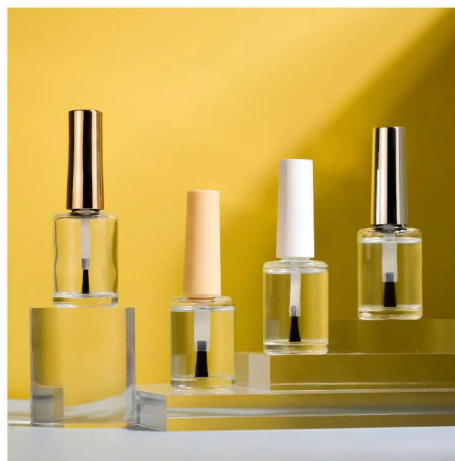
Net content:18ml



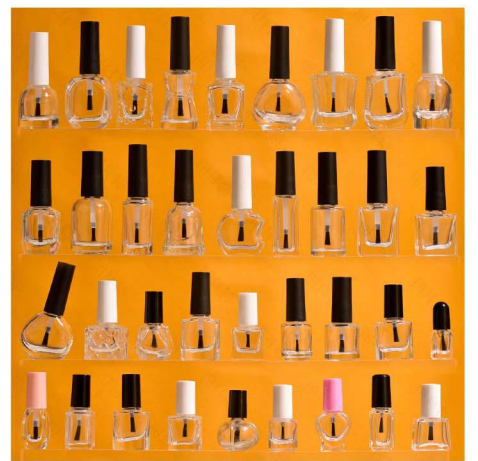
Net content:8ml



Net content:23ml



Net content:15ml



Net content:8-15ml